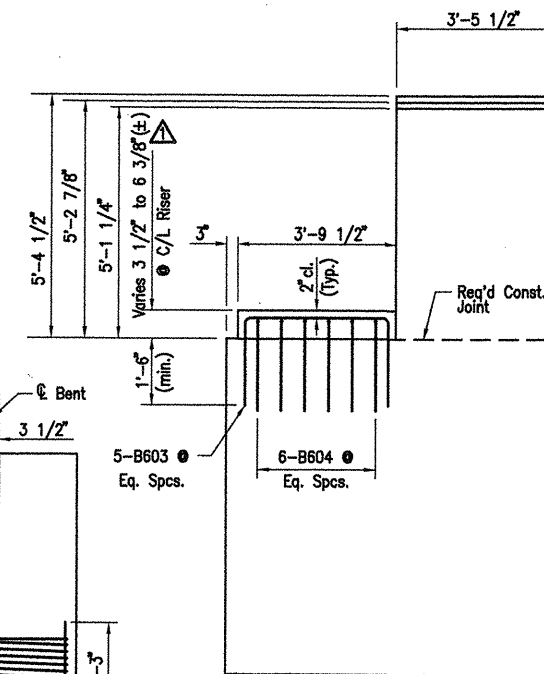
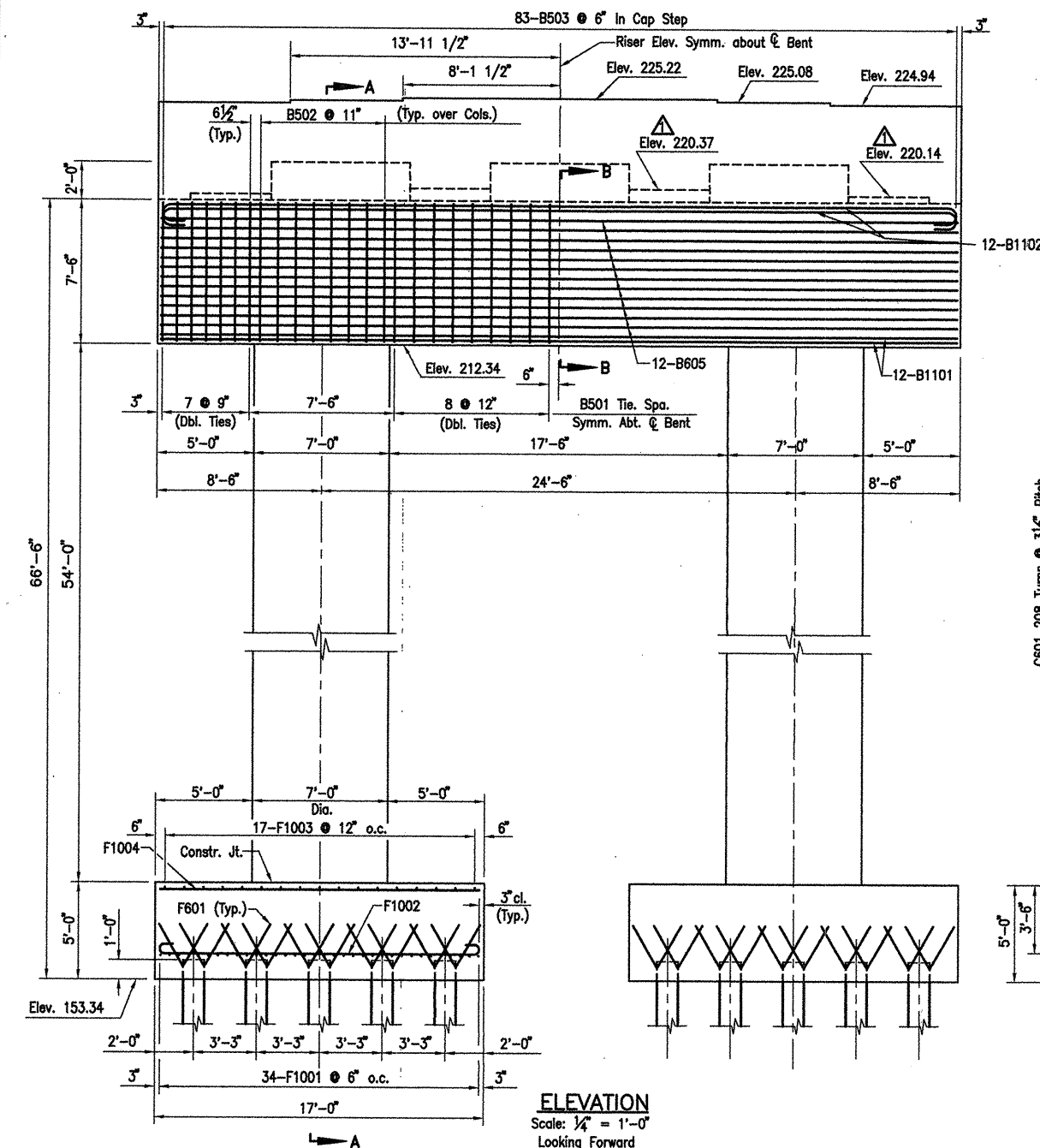
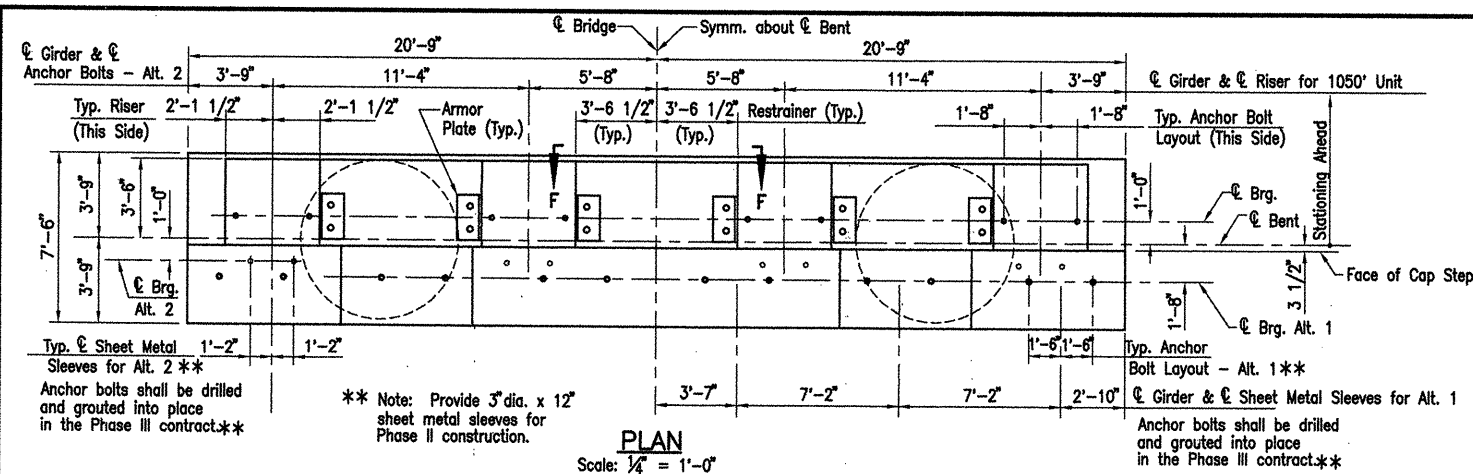
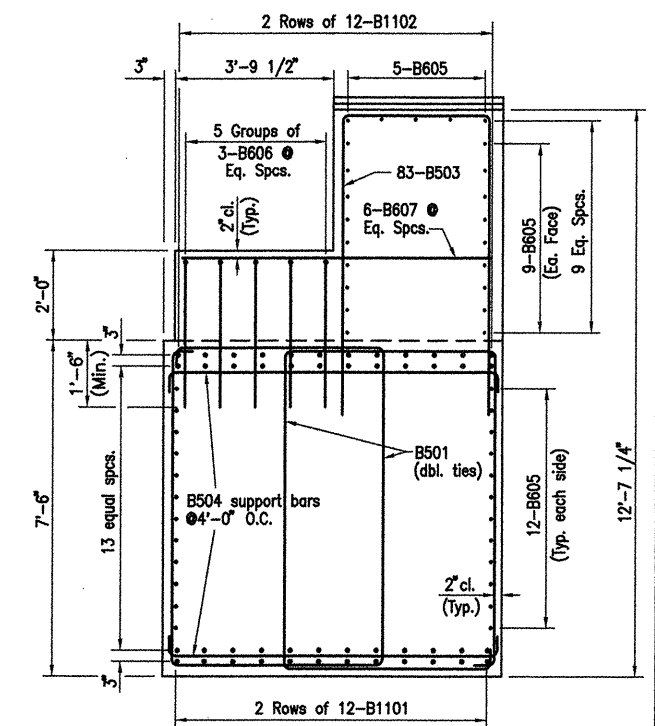


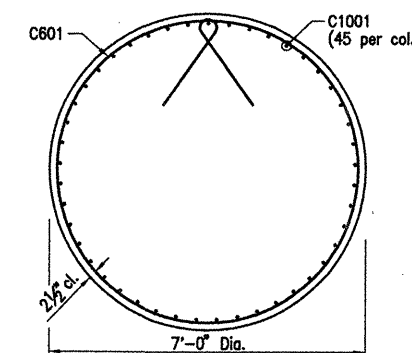
DATE REVISED	DATE FILMED	DATE REVISED	DATE FILMED	FED. ROAD NO.	STATE	FED. AID PROJ. NO.	SHEET NO.	TOTAL SHEETS
06/03/10					ARK.			
				JOB NO.		110394	52	196
				06830	BENT 82		41964	



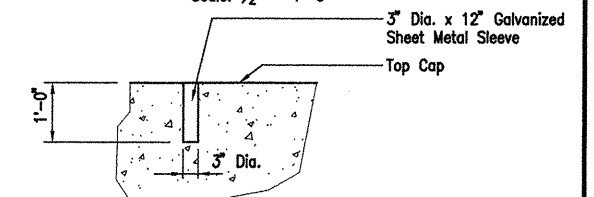
RISER DETAIL
Scale: $\frac{1}{2}" = 1'-0"$



SECTION B-B
Scale: $\frac{1}{2}'' = 1'-0''$



SECTION C-C
Scale: $\frac{1}{2}" = 1'-0"$



Note: Metal Sleeves shall be set at locations shown with templates securely fastened to the cap frames. The Sleeves shall be filled with concrete and have the dimensions shown above. Sleeves will not be paid for directly, but will be considered subsidiary to "Class S Concrete."

TYPICAL GALVANIZED SHEET
METAL SLEEVE DETAIL

Note: Anchor Bolts will be supplied in a later contract.

Note:
For Sections D-D and F-F,
See Dwg. No. 41965.

-F, ALTERNATE NO. 1
DETAILS OF BENTS - WHITE RIVER
BENT 82
(SHEET 1 OF 2)

REGISTERED
PROFESSIONAL
ENGINEER
No. 4281
W. B. CONWAY
614970

WHITE RIVER STR. & APPRS.
(CLARENDON) (PH II) (F)
MONROE COUNTY
ROUTE 79 SEC. 13
ARKANSAS STATE HIGHWAY COMMISSION
LITTLE ROCK, ARK.

Engstrom & Modjeski and Masters, Inc.

DRAWN BY: CJA DATE: Nov. 07 FILENAME: b1103941_b01
CHECKED BY: FS DATE: Nov. 01 SCALE: 1/4" = 1'-0"
DESIGNED BY: BMH DATE: Nov. 01
BRIDGE NO. 06830 DRAWING NO. 41964

ACAD SCALE: 1/4"=1'-0"

COMPANY\1999 JOBS\99-044 AHTD\WHITERIVER\JOB 110394\1dtlbnt82alt1

Note:
For details of Elastomeric Bearings,
see Dwg. No. 42012 & 42013

* - No lap splice of C601 permitted in this length.

C601 208 Turns @ $3\frac{1}{2}$ " Pitch

SECTION A-
Scale: $\frac{1}{4}" = 1'-0"$

12" 0 2' 4' 6'

SCALE IN FEET

BRIDGE ENGINEER